

REMINGTON®

4-in-1 EPILATOR

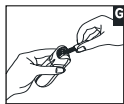
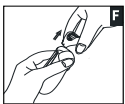
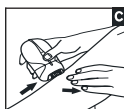
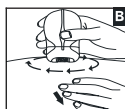
smooth & silky®



EP7020

£10,000 prize draw
PLUS Free Rewards Gallery

Register online now to
collect your reward
See back for
details



Thank you for buying your new Remington® product.

Before use, please read these instructions carefully and keep them safe. Remove all packaging before use.



CAUTION

- Use this appliance only for its intended use as described in this manual.
- Do not use the appliance if it is damaged or malfunctions.



KEY FEATURES

- 1 Tweezers
- 2 Perfect Angle Cap
- 3 Removable & Washable Head
- 4 Precision Light
- 5 On/Off Switch – 2 Speeds
- 6 Power Connection
- 7 Head Release Button
- 8 Anti Slip Grip
- 9 Detail Cap
- 10 Massage Cap with Aloe Vera
- 11 Shaver Head
- 12 Cleaning Brush (not shown)
- 13 Beauty Bag (not shown)
- 14 Power Cord (not shown)



IMPORTANT SAFETY INSTRUCTIONS

WARNING – TO REDUCE THE RISK OF BURNS, ELECTROCUTION, FIRE, OR INJURY TO PERSONS:

- Do not leave the appliance unattended while plugged in
 - Keep the power plug and cord away from heated surfaces
 - Do not use the product with a damaged cord. A replacement can be obtained via our International Service Centres
 - Store the product at a temperature between 15°C and 35°C
 - Only use the parts supplied with the appliance
 - Do not twist or kink the cable and don't wrap it around the appliance.
 - The body of this appliance is not washable or water resistant. Do not put the appliance in liquid; do not use it near water in a bath-tub, basin or other vessel; and don't use it outdoors.
 - Make sure the power cable and adaptor do not get wet. Do not reach for your unit if it has fallen into water – immediately unplug it from the electrical outlet.
 - Do not plug or unplug the appliance with wet hands.
 - This appliance can be used by children aged from 8 years and above and persons with reduced physical, sensory or mental capabilities or lack of experience and knowledge if they have been supervised/instructed and understand the hazards involved. Children shall not play with the appliance. Cleaning and user maintenance shall not be made by children unless they are older than 8 and supervised.
- Keep the appliance and cable out of reach of children under 8 years.



- Do not use this appliance with a damaged or broken tweezer barrel as injury may occur.
- This appliance should be supplied with approved safety isolating adaptors SW-120060EU (for Europe) and SW-120060BS (for United Kingdom) with the output capacity of 12 dc; 600mA (adaptor output).

GETTING STARTED

Be patient when first using your epilator, as with any new product, it may take a little while to familiarise yourself with the product. Take the time to acquaint yourself with your shaver, as we are confident you will receive years of enjoyable use and complete satisfaction.

GENERAL INFORMATION ON EPILATION

This Remington® epilator has been designed to make the removal of unwanted hairs as efficient, gentle and easy as possible.

The rotating tweezers catch even the shortest hairs (minimum length 0.5mm) and pull them out by the root. The hairs that grow back are soft and thin. Epilating leaves your skin smooth and hair-free for several weeks.

If you have not used an epilator before, or if you have not epilated for a long period of time, it may take a short while for your skin to adapt to epilation. The discomfort experienced at first is considerably reduced with repeated use as the skin adjusts to the process.

Using an epilator may cause reddening or irritation of the skin. This is a normal reaction that will quickly disappear. However, you should consult your doctor if the irritation has not disappeared within three days.

All methods of hair removal from the root can result in in-growing hair depending on the condition of the skin and hair. Regular exfoliation helps to prevent in-growing hair.

In some cases inflammation of the skin could occur when bacteria penetrate the skin (e.g. when sliding the appliance over the skin). Thorough cleaning of the epilation head before each use will minimise the risk of infection.

HOW TO USE

Useful Tips

- When using an epilator for the first time it is best to try it on a small area to get used to the process of epilation.
- The optimum length for hair removal is between 2-5mm. Epilation is easier and more comfortable.
- Take a warm bath or shower before epilating and exfoliate to remove dead skin cells. This will make your skin more pliable, making the epilation process less uncomfortable.
- Epilate in the evening so that any possible reddening can disappear overnight.
- After use you can use a body cream or aloe lotion to soothe the skin and reduce skin irritation.
- Exfoliate regularly to avoid in-growing hair.

Why Exfoliate?

Exfoliation prevents in-growing hairs. Ingrown hairs occur when the growing hair curls up under the skin instead of growing out like it should. It results in an often painful red bump and possible infections. Rubbing your skin with an exfoliation glove in the shower or bath, or using a dry body brush will help reduce ingrown hairs or infections.

Before epilating make sure that the skin is clean, dry and free from creams or oils.

Rub the skin in the area to be epilated to lift short hairs to optimise hair removal.

Ensure the Epilator is OFF and attach the power cord to the product and then to the mains.

Turn the epilator on to the desired speed:

LOW is recommended for fine hair

HIGH is recommended for coarse hair or stronger hair growth

Using your free hand, hold the skin taut to make the hairs stand upright

Position the epilator flat so that the tweezers are at a 90° angle and flat against the skin. The Perfect Angle Cap will ensure the optimum tweezing angle. (DIAGRAM A)

Using small circular motions, slowly and gently glide the epilator over the skin. This circular motion is the most effective method and makes the process less uncomfortable. Alternatively, guide the epilator in a slow, continuous movement against the hair growth. (Diagram B)

Repeat within each area until all unwanted hair is removed.

After epilating, turn the epilator off.

✳️ **ARM/LEG EPILATION:** (Diagram C)

Epilate from the lower arm/leg and slowly move upwards. To epilate behind the elbow knee, keep the arm/leg straight to stretch the skin.

✳️ **UNDERARMS AND BIKINI:** (Diagram D and E)

Please be aware that these areas are particularly sensitive. However this sensitivity will reduce after repeated usage. For more comfort, ensure that the skin is held taut and that the hair is at the optimum length of 2-5mm. If it has been an extended period of time since you have removed hair, trim the hair with a Remington® bikini trimmer or cosmetic trimmer before epilation.

✳️ **FACIAL EPILATION:**

- Use the Detail Cap.
- Place epilator at a 90° angle to the skin and move the epilator head in a circular motion.

NOTE: Do not use for removing hair from the eyebrow.

Keep the product away from hair on the scalp, eyebrows and eyelashes.

✳️ **PRECISION LIGHT:**

- The precision light is incorporated into the ON/OFF switch to help to see every hair.

✳️ **DETAIL CAP:**

- The detail cap is designed for small areas (including the face) and spot treatments.
- Ensure the epilator is switched off.
- Remove the Perfect Angle or Massage Cap.

- Place the Detail Cap into the appropriate slots at the top of the epilator.
- Gently press the Detail Cap into place until you hear a “click”

*** MESSAGE CAP WITH ALOE VERA:**

The Massage Cap is designed for gentler epilation.

- Ensure the epilator is switched off.
- Remove Perfect Angle or Detail Cap.
- Place the Massage Cap into the appropriate slots at the top of the epilator.
- Gently press the Detail Cap into place until you hear a “click”

*** SHAVER HEAD:**

The shaver head provides a close shave for sensitive areas.

- Ensure the epilator is switched off.
- Press the head release button and remove the epilator head.
- Attach the shaver head until it clicks into place.
- Hold the shaver head at a 90° angle to the skin and move against the direction of hair growth.



CAUTION

- For your protection your epilator may slow down or even stop if pressed too firmly against the skin.
- Do not use the epilating head on irritated skin or skin with varicose veins, rashes, spots, moles or wounds without consulting a doctor. People with reduced immune response e.g. during pregnancy, or people who suffer from diabetes mellitus, haemophilia or immunodeficiency should also consult their doctor before using this product.
- For hygiene reasons do not let another person use your epilator. It is recommended for use by one person only.



CLEANING AND MAINTENANCE

To ensure long lasting performance of your epilator, clean the head assembly regularly.

Cleaning the epilation head after each use:

- Ensure the epilator is turned off and disconnected from the mains.
- Press the head release button and open the head assembly. (Diagram F)
- Turn the head assembly upside down.
- The epilator head can be removed and rinsed for cleaning. For optimal cleaning; brush hairs from the tweezers before rinsing. (Diagram G)
- Allow to dry completely before reattaching the epilator body.

NOTE: The body of the epilator is not washable. The epilator head must be removed prior to rinsing under water. **DO NOT SUBMERGE IN WATER.**

To remove residue:

- To remove residue from the stainless steel tweezers, dampen a swab with alcohol.
- Gently run the swab over the tweezers until the residue has been removed.

CAUTION: Make sure that the cotton swab is not soaked in alcohol as this may damage the epilator.

Cleaning the Shaver Head after each use:

- Ensure the epilator is turned off and disconnected from the mains.
- Press the head release button and remove the shaving head.
- Remove the blade and trimmer assembly by placing your fingers either side of the assembly and pulling upwards.
- Gently shake the blade and trimmer assembly to remove the hair. Use the cleaning brush to brush the trimmers and shaver housing.
- Replace the blade and trimmer assembly.

NOTE: Never use the cleaning brush on the foil as damage may occur.



ENVIRONMENTAL PROTECTION

To avoid environmental and health problems due to hazardous substances in electrical and electronic goods, appliances marked with this symbol mustn't be disposed of with unsorted municipal waste, but recovered, reused, or recycled.



➡ SERVICE AND GUARANTEE

This product has been checked and is free of defects.

We guarantee this product against any defects that are due to faulty material or workmanship for the guarantee period from the original date of consumer purchase.

If the product should become defective within the guarantee period, we will repair any such defect or elect to replace the product or any part of it without charge, provided there is proof of purchase.

This does not mean an extension of the guarantee period.

In the case of a guarantee simply call the Service Centre in your region.

This guarantee is offered over and above your normal statutory rights.

The guarantee shall apply in all countries in which our product was sold via an authorised dealer.

This guarantee does not include damage to the product by accident or misuse, abuse, alteration to the product or use inconsistent with the technical and/or safety instructions required.

This guarantee shall not apply if the product has been dismantled or repaired by a person not authorised by us.

If you ring the Service Centre, please have the Model No. to hand, as we won't be able to help you without it.

It's on the rating plate which can be found on the appliance.

UNITED KINGDOM



+44 0800 212 438 (free call)

Customer Services

Spectrum Brands(UK) Limited

Fir Street, failsworth, Manchester ,

M35 0HS,UK

www.remington.co.uk

12/UK/EP7020 Version 12/12 Part No. T22-0000393

Remington® is a Registered Trade Mark of Spectrum Brands, Inc.,
or one of its subsidiaries

Spectrum Brands (UK) Ltd

Fir Street,

Failsworth,

Manchester

M35 0HS

www.remington.co.uk

© 2012SBI



REGISTRATION AND PRIZE DRAW

Collect your free reward, and a chance to win £10,000.

Visit www.productregister.co.uk/remington